

1 数控插齿机

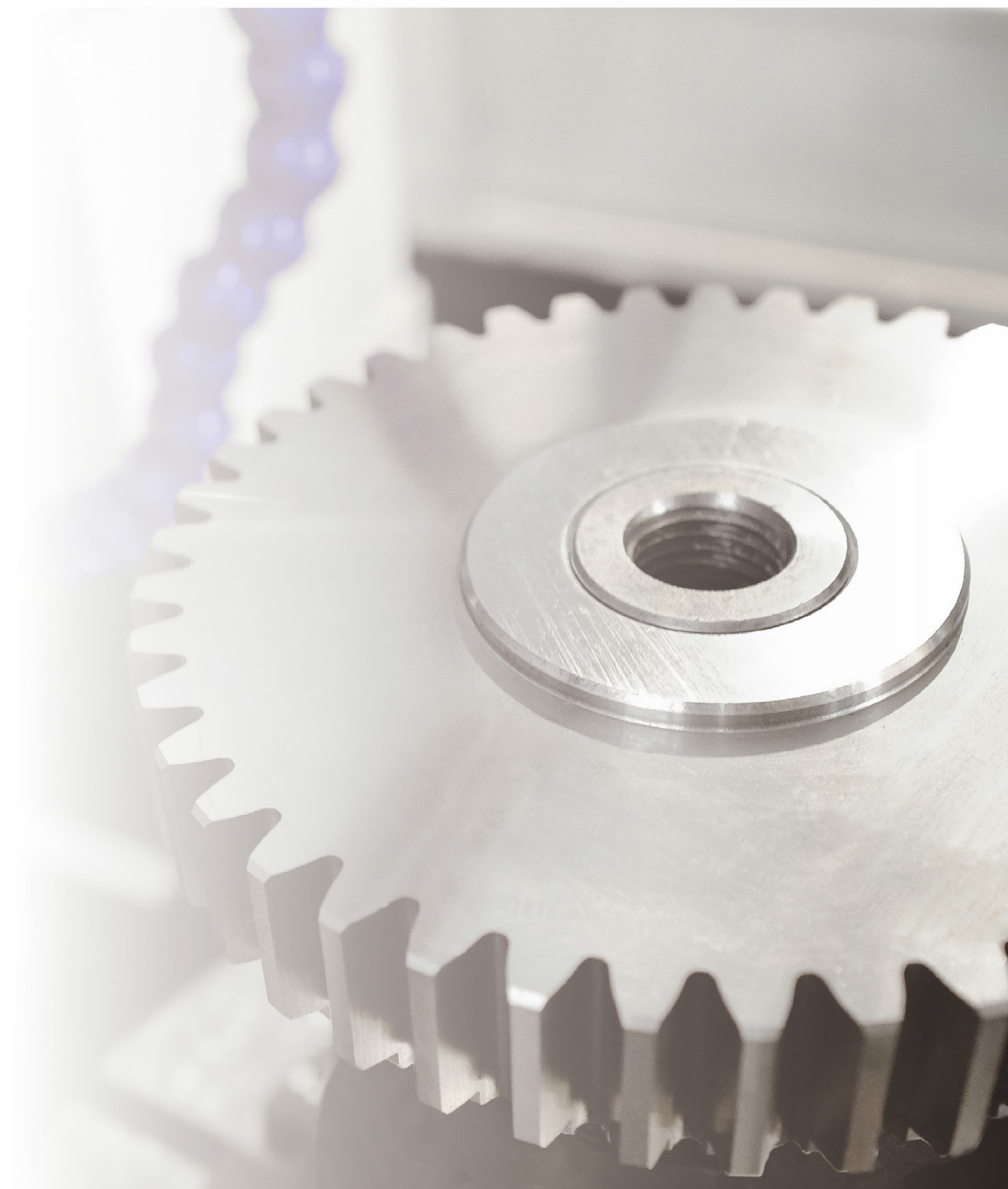
■ CNC GEAR SHAPING MACHINE

效率与品质的代名词

品类最多,规格最全,提供全系列高效数控插齿机,融合了多年的客户定制化服务设计经验,公司产品被中国机床工具工业协会评为“质量十佳”。数控插齿机被工信部认定为“单项冠军”产品。

It is synonymous with efficiency and quality

The company has the most categories and the most complete specifications. It provides a full range of high-efficiency CNC gear shaping machines, and integrates years of customer customization service design experience. The company's products have been rated as 'Top Ten Quality' by CMTBA. The CNC gear shaping is recognized as a 'single champion' product by the Ministry of Industry and Information Technology.



高精度小模数数控插齿机

CNC HIGH PRECISION (SMALL MODULE) GEAR SHAPING MACHINE

机床特点

1. 高精度:精度稳定国标五级;
2. 高稳定性:床身采用热平衡结构,消除温度的影响;
3. 静压刀架体;
4. 力矩电机直驱工作台。

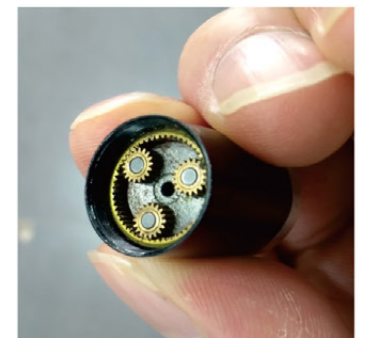
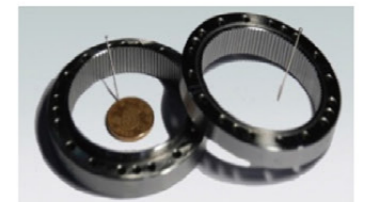
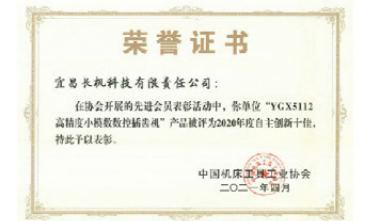
MACHINE TOOL FEATURES

1. High precision, Quality GB5 Class.
2. High stability, the machine bed with heat balance structure to eliminate the influence of temperature.
3. Hydrostatic Spindle.
4. Torque motor direct drive table.



技术参数 THE MAIN PARAMETERS

名称 Description		型号 Type
		YGX5112A
最大加工外齿直径 Max. external gear diameter	mm	120
最大加工内齿直径 Max. internal gear diameter	mm	100+D刀
最大加工模数 Max. Module	mm	2
最大加工齿宽 Max. face width	mm	30
插齿刀冲程长度 Max. stroke length	mm	40
插齿刀冲程速度 Stroke speed	str/min	125~500
插齿刀让刀量 Cutter relieving	mm	≥0.3
插齿刀行程位置调整量 Adjusting amount of stroke position	mm	20
刀轴直径 Spindle diameter	mm	65
工作台直径 Diameter of worktable	mm	240
插齿刀轴线至工作台轴线距离 Axis distance cutter/ worktable	mm	-50~150
机床主轴端面至工作台面距离 Surface distance spindle/worktable	mm	160~220
机床总功率 Total power	kW	约20
机床重量 Total weight	t	约4.5
主机外形尺寸(长×宽×高) Main Machine Dimension	m	2.4x1.6x2.1



注:
1. 重量仅供搬运起运时参考,具体以实物为准;
2. 公司持续创新机床设计,本手册中各系列产品参数将持续优化。

Note:
1. The weight is for reference only, and the actual product shall prevail;
2. We continue to innovate machine tool design. The parameters of each series of products in this manual are for reference only. If you have any inquiry, please contact us for the update.

小型数控插齿机

CNC SMALL GEAR SHAPING MACHINE

机床特点

- 1、高刚性:床身全新设计,加大导轨截面尺寸,铸件结构热变形分析;
- 2、高速干切:床身设计大角度,多点排屑,全不锈钢覆盖满足干切排屑条件;
- 3、高稳定性:优化的闭环控制反馈、冷却油制冷系统、严格的过程控制、不锈钢覆盖减少热变形保证机床具有高稳定性;闭环反馈补偿;
- 4、占地面积小:集成化设计使机床占地面积小,方便搬运及组线;
- 5、优化的防护:加工区域为局部全防护,配合油雾分离器使用,提升过滤吸附效果。

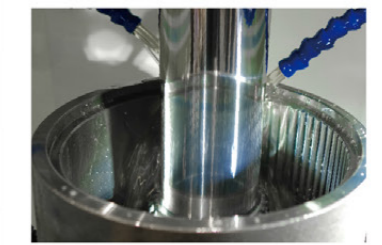
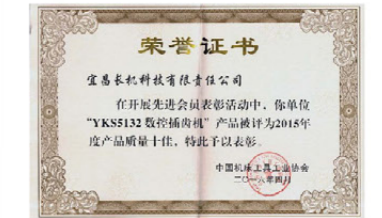
MACHINE TOOL FEATURES

1. High rigidity: The new design of the bed, the increase of the cross-section size of the guide rail, and the thermal deformation analysis of the casting structure.
2. High-speed dry cutting: The bed is designed with a large angle, multi-point chip removal, and full stainless steel coverage to meet the dry cutting chip removal conditions.
3. High stability: Optimized closed-loop control feedback, cooling oil refrigeration system, strict process control, stainless steel coverage to reduce thermal deformation ensure high stability of the machine tool; closed-loop feedback compensation.
4. Small footprint: The integrated design makes the machine cover a small area and is convenient for handling and automatic production line.
5. Optimized protection: The processing area is partially protected and used with an oil mist separator to improve the filtration and adsorption effect.



技术参数 THE MAIN PARAMETERS

名称 Description		型号 Type		
		YKG5132J	YKS5132H YKD5132H	YKH5132H
最大加工外径直径 Max.external gear diameter	mm	320	320	320
最大加工内径直径 Max.internal gear diameter	mm	220+D刀	220+D刀	220+D刀
最大加工模数 Max. module	mm	6	8	8
最大加工齿宽 Max. face width	mm	90	90	90
插齿刀冲程长度 Max. stroke length	mm	100	100	100
插齿刀冲程速度 Max.stroke speed	str/min	150~1250	125~2000	125~2000
插齿刀让刀量 Cutter relieving	mm	≥0.3	≥0.3	≥0.3
插齿刀行程位置调整量 Adjusting amount of stroke position	mm	30	30	30
插齿刀安装轴颈直径 Diameter of cutter neck	mm	31.743	31.743	31.743
刀轴直径 Spindle diameter	mm	85	85	85
工作台直径 Diameter of worktable	mm	325/300	420/325	420/325
工作台孔径 Diameter of worktable bore	mm	100/70	120/100	120/100
工作台可倾斜角度 Sloping angle of worktable		0/±12°	0/±12°	0/±12°
插齿刀轴心线至工作台轴心线距离 Axis distance cutter/worktable	mm	-110~250	-110~300	-110~250
主轴端面至工作台面距离 Surface distance spindle/worktable	mm	140~270	140~270	140~270
机床总功率 Total power	kW	约25	约28	约30
机床重量 Total weight	t	约5.5	约9	约9
主机外形尺寸(长×宽×高) Main Machine Dimension	m	2.53x1.2x2.46	2.84x1.48x2.9	2.65x1.6x2.8



注:

1. 重量仅供搬运起重时参考,具体以实物为准;
2. 外观防护分半防护、全防护,用户可根据实际需要进行选择;
3. 公司持续创新机床设计,本手册中各系列产品参数将持续优化。

Note:

1. The weight is for reference only, and the actual product shall prevail;
2. The appearance protection of this machine tool has two options: semi-protection and full protection, which can be selected according to actual needs;
3. We continue to innovate machine tool design. The parameters of each series of products in this manual are for reference only. If you have any inquiry, please contact us for the update.

中型数控插齿机

CNC MIDDLE GEAR SHAPING MACHINE

机床特点

- 1、机床主冲程采用主轴伺服电机直驱。
- 2、具有刀轴急回功能,缩短了空行程时间,提高加工效率。
- 3、传动齿轮箱实现消除传动。

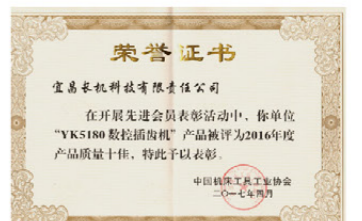
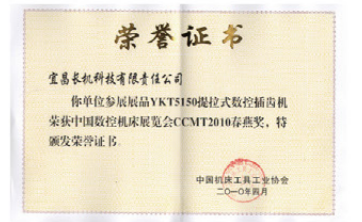
MACHINE TOOL FEATURES

1. The main stroke of the machine tool is driven directly by the spindle servo motor.
2. The tool shaft quick return function shortened the empty travel time and improved the processing efficiency.
3. The transmission gearbox realizes backlash-free transmission.



技术参数 THE MAIN PARAMETERS

名称 Description		型号 Type			
		YK5150H	YK(H)5150N YKD(H)5150N	YK5180C	YK5180D
最大加工直径内齿/外齿 Max. diamter intemall/external	mm	500/600	500/600	800/1100	800/1100
最大模数 Max. module	mm	10	10	12	12
最大齿宽 Max. face width	mm	140	200	250	250
插齿刀冲程长度 Max. stroke length	mm	160	220	270	270
插齿刀冲程速度 Max.stroke speed	str/min	40~400	40~600	30~400	30~400
插齿刀行程位置调整量 Adjusting amount of stroke position	mm	50	50	50	50
圆周进给量 Circular feed	mm/str	0~2	0~2	0~2	0~2
径向进给量 Redial feed	mm/min	0~1000	0~1000	0~1000	0~1000
插齿刀让刀量 Cutter relieving	mm	≥0.5	≥0.5	≥0.5	≥0.5
插齿机刀轴直径 Cutter shaft diameter of gear shaper	mm	100	120	120	140
插齿刀安装轴直径 Installation shaft diameter of gear shaper	mm	31.743	44.443	44.43	44.45
工作台直径 Worktable diameter	mm	700	700/600	900	900
工作台孔径 Bore of the worktable	mm	140	140	320	320
工作台T型槽宽度 Width of T-groove of worktable	mm	22、6等分	22、6等分	22、8等分	22、8等分
插齿刀轴心线至工作台轴心线距离 Axis distance cutter spindle /worktable	mm	-40~400	-40~400	0~730	0~730
主轴端面至工作台面距离 Surface distance spindle /worktable	mm	320~530	255~525/185~455	285~605	285~605
机床总功率 Total power	kW	约35	约35	约35	约42
机床重量 Total weight	t	约10	约12	约16	约16
主机外形尺寸(长×宽×高) Main Machine Dimension	m	2.38×1.32×2.89	2.38×1.32×3.35	3.7×2×3.5	3.7×2×3.65



- 注:
- 1、重量仅供搬运起吊时参考,具体以实物为准;
 - 2、外观防护分半防护、全防护,用户可根据实际需要进行选择;
 - 3、公司持续创新机床设计,本手册中各系列产品参数将持续优化。

Note:

1. The weight is for reference only, and the actual product shall prevail;
2. The appearance protection of this machine tool has two options: semi-protection and full protection, which can be selected according to actual needs;
3. We continue to innovate machine tool design. The parameters of each series of products in this manual are for reference only. If you have any inquiry, please contact us for the update.

大型数控插齿机

CNC LARGE GEAR SHAPING MACHINE

机床特点

- 1、机床采用大立柱进给，刚性好；
- 2、进给导轨副采用卸荷机构，确保进给平稳性；
- 3、驱动箱采用消隙机构，确保切削刚性并提升刀具寿命。

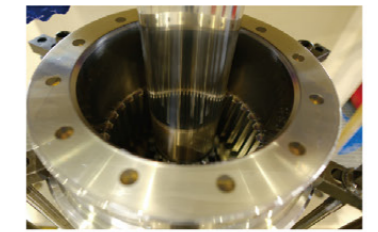
MACHINE TOOL FEATURES

- 1.The machine with heavy column feeding for good rigidity.
- 2.Hydraulic unloading mechanism to ensure the feed stability.
- 3.The drive box with clearance adjusting mechanism to ensure cutting rigidity and increasing cutter life.



技术参数 THE MAIN PARAMETERS

名称 Description		型号 Type			
		YK51125E	YK51160D	YK51250E	YK51350
最大加工外径直径 Max. external gear diameter	mm	1250	1600	2500	3500
最大加工内径直径 Max. internal gear diameter	mm	1600	2100	3000	4000
最大加工模数 Max. module	mm	16	16	25	30
最大加工齿宽 Max. face width	mm	300	300	400	500
插齿刀冲程长度 Max. stroke length	mm	330	330	430	530
插齿刀冲程速度 Max. stroke speed	str/min	15~150	15~150	15~120	15~120
插齿刀让刀量 Cutter relieving	mm	≥0.5	≥0.5	≥0.5	≥0.5
插齿刀行程位置调整量 Adjusting amount of stroke position	mm	50	50	60	60
插齿刀安装轴颈直径 Diameter of cutter neck	mm	88.9/101.6	88.9/101.6	88.9/101.6	88.9/101.6
刀轴直径 Spindle diameter	mm	140	140	160	180
工作台直径 Diameter of worktable	mm	1300	1600	2100	3000
工作台孔径 Diameter of worktable bore	mm	300	300	500	600
插齿刀轴心线至工作台轴心线距离 Axis distance cutter spindle /worktable	mm	0~800	0~1000	240~1500	750~2100
主轴端面至工作台面距离 Distance nose of spindle /worktable	mm	250~630	370~750	260~750	460~1050
机床总功率 Total power	kW	约50	约50	约50	约52
机床重量 Total weight	t	约32	约36	约43	约55
主机外形尺寸(长×宽×高) Main Machine Dimension	m	6x3.1x4.3	6.1x3.1x4.6	7.1x4x4.9	7.53x5x4.98



注：
1、重量仅供搬运起重时参考，具体以实物为准；
2、外观防护分半防护、全防护，用户可根据实际需要进行选择；
3、公司持续创新机床设计，本手册中各系列产品参数将持续优化。

Note:
1. The weight is for reference only, and the actual product shall prevail;
2. The appearance protection of this machine tool has two options: semi-protection and full protection, which can be selected according to actual needs;
3. We continue to innovate machine tool design. The parameters of each series of products in this manual are for reference only. If you have any inquiry, please contact us for the update.

提拉式数控插齿机

CNC LIFTING GEAR SHAPING MACHINE

机床特点

1. 提拉机构驱动机床滑座整体上下移动,行程调整方便;
2. 针对有相位要求的双联、多联齿加工,可一次装夹完成。

MACHINE TOOL FEATURES

- 1.The lifting mechanism drives the slider of the machine to move up and down,easy to adjust the stroke length.
- 2.For Cutting double and multi-connected gears with gear phase requirements, it can be clamped at one time.



技术参数 THE MAIN PARAMETERS

名称 Description		型号 Type				
		YKT5132A	YKT5150C	YKT5180C	YKT51125C	YKT51160C
最大加工外径直径 Max. external gear diameter	mm	320	500	800	1250	1600
最大加工内径直径 Max. internal gear diameter	mm	220+D刀	600	1100	1600	2100
最大加工模数 Max. module	mm	8	10	12	12	16
最大加工齿宽 Max. face width	mm	90	200	250	250	350
插齿刀冲程长度 Max. stroke length	mm	100	220	270	270	380
插齿刀冲程速度 Max. stroke speed	str/min	125~1250	40~400	30~240	30~240	20~150
插齿刀让刀量 Cutter relieving	mm	≥0.3	≥0.5	≥0.5	≥0.5	≥0.5
刀架提拉行程 Axial slide travel range of cutter head		300	400	500	500	500
插齿刀安装轴颈直径 Diameter of cutter neck	mm	31.743	31.743	44.443	44.443	88.9
刀轴直径 Spindle diameter	mm	85	100	120	120	140
工作台直径 Diameter of worktable	mm	420	700	900	1300	1600
工作台孔径 Diameter of worktable bore	mm	120	140	320	300	300
插齿刀轴心线至工作台轴心线距离 Axis distance cutter/worktable	mm	-110~265	-40~450	0~640	0~800	0~1000
主轴端面至工作台面距离 Surface distance spindle/worktable	mm	85~485	150~770	200~970	420~1190	520~1400
机床总功率 Total power	kW	约30	约35	约42	约55	约79
机床重量 Total weight	t	约12	约16	约21	约31	约47
主机外形尺寸(长×宽×高) Main Machine Dimension	m	3.15x2x2.8	3.51x1.96x3.7	3.66x1.96x4.67	5.93x3.13x4.84	6.39x3.72x6

注:

1. 重量仅供搬运起重时参考,具体以实物为准;
2. 外观防护分半防护、全防护,用户可根据实际需要进行选择;
3. 公司持续创新机床设计,本手册中各系列产品参数将持续优化。

Note:

1. The weight is for reference only, and the actual product shall prevail;
2. The appearance protection of this machine tool has two options: semi-protection and full protection, which can be selected according to actual needs;
3. We continue to innovate machine tool design. The parameters of each series of products in this manual are for reference only. If you have any inquiry, please contact us for the update.

万能数控插齿机

CNC HELICAL GUIDE GEAR SHAPING MACHINE

机床特点

- 1、机床七轴五联动。
- 2、具有校正螺旋角的功能。FHB值(螺旋线倾斜偏差)能够在调节插齿机时非常简单地输入和精确校准,此外还可以设一个FHB预留补偿值,以补偿随后的热处理变形。校正精度可达到微米范围。
- 3、安全可靠,具有断电回退功能,确保异常情况下刀具不被损坏。
- 4、曲柄轴具有自动平衡功能,消除运动过程中的偏心力,保障高效加工。
- 5、自动化程度高,操作方便:具有七轴五联动功能,可以实现大行程自动调整,伺服让刀实现让刀位置、让刀方式自动调整等功能。

MACHINE TOOL FEATURES

- 1.7 CNC with 5 CNC -linkage.
2. Correcting helical angle function. The value fhb (helix tilt deviation) can be easily input and accurately calibrated when adjusting the gear shaper. In addition, can be set a fhb reserved compensation value to compensate for the subsequent heat treatment deformation. The correction accuracy can reach the microns class.
3. High safety and reliability. Automatically retract function with the machine when power broken, ensure the cutter safety.
4. The crank shaft has automatic balance function, which eliminates the eccentric force in the process of movement and ensures efficient machining.
5. High automation, easy for operating, 7 CNC with 5 CNC -linkage, stroke length automatic adjusting, the cutter servo relieving can make the cutter relieving's position and mode adjust automatically.



技术参数 THE MAIN PARAMETERS

名称 Description		型号 Type					
		YKW5132	YKW5165A	YKW5180A	YKW51125A	YKW51160	YKW51250
最大加工外径直径 Max. external gear diameter	mm	320	650	800	1250	1600	2500
最大加工内径直径 Max. internal gear diameter	mm	220+D刀	800	1100	1600	2100	2500
最大加工模数 Max. module	mm	8	12	12	20	20	20
最大加工齿宽 Max. face width	mm	100	200	200	350	350	420
插齿刀冲程长度 Max. stroke length	mm	120	230	230	380	380	450
插齿刀冲程速度 Max. stroke speed	str/min	125~1250	40~600	40~600	10~200	10~200	15~150
插齿刀让刀量 Cutter relieving	mm	≥0.3	≥0.5	≥0.5	≥0.5	≥0.5	≥0.5
刀架提拉行程 Lifting slide travel range of cutter head	mm	300	400	400	500	500	500
插齿刀安装轴颈直径 Diameter of cutter neck	mm	31.743	31.743	31.743	88.9	88.9	88.9
刀轴直径 Spindle diameter	mm	85	100	120	140	140	140
工作台直径 Diameter of worktable	mm	420	700	900	1300	1600	2100
工作台孔径 Diameter of worktable bore	mm	120	140	320	300	300	500
插齿刀轴心线至工作台轴心线距离 Axis distance cutter/worktable	mm	-110~265	-40~450	-40~650	0~800	0~1000	140~1400
主轴端面至工作台面距离 Surface distance spindle/worktable	mm	115~535	370~1000	300~930	435~1315	370~1250	265~1215
机床总功率 Total power	kW	约85	约100	约100	约120	约120	约130
机床重量 Total weight	t	约15	约22	约30	约50	约60	约70
主机外形尺寸(长×宽×高) Main Machine Dimension	m	3.2x1.65x3.78	3.5x1.96x4.58	6.1x3.1x5.6	5.66x3.13x5.9	6.73x3.72x5.6	7x4x6.2



注:
1. 重量仅供搬运起重时参考,具体以实物为准;
2. 外观防护分半防护、全防护,用户可根据实际需要进行选择;
3. 公司持续创新机床设计,本手册中各系列产品参数将持续优化。

Note:
1. The weight is for reference only, and the actual product shall prevail;
2. The appearance protection of this machine tool has two options: semi-protection and full protection, which can be selected according to actual needs;
3. We continue to innovate machine tool design. The parameters of each series of products in this manual are for reference only. If you have any inquiry, please contact us for the update.

液压冲程数控插齿机

CNC HYDRAULIC STROKE GEAR SHAPING MACHINE

机床特点

1. 超大齿宽加工, 最大加工齿宽达到750MM;
2. 主运动伺服液压油缸驱动, 带刀具位置自动调整和急回特性;
3. 立柱伺服让刀, 刚性更好。

MACHINE TOOL FEATURES

1. Large tooth width processing, with the maximum width of 750mm.
2. The main motion is driven by servo hydraulic cylinder, with automatic tool position adjustment and quick return features.
3. Column servo tool black-off, with better rigidity.



技术参数 THE MAIN PARAMETERS

名称 Description		型号 Type	
		YKY51160	YKY51250
最大加工外径直径 Max. external gear diameter	mm	1600	2300
最大加工内径直径 Max. internal gear diameter	mm	2100	2500
最大加工模数 Max. module	mm	25	25
最大加工齿宽 Max. face width	mm	750	750
插齿刀冲程长度 Max. stroke length	mm	800	800
插齿刀冲程速度 Max. stroke speed	str/min	15~120	15~120
插齿刀让刀量 Cutter relieving	mm	≥0.5	≥0.5
插齿刀行程位置调整量 Adjusting amount of stroke position	mm	60	
插齿刀安装轴颈直径 Diameter of cutter neck	mm	88.9/101.6	88.9/101.6
刀轴直径 Spindle diameter	mm	180	180
工作台直径 Diameter of worktable	mm	1600	2100
工作台孔径 Diameter of worktable bore	mm	500	500
插齿刀轴心线至工作台轴心线距离 Axis distance cutter spindle /worktable	mm	0~1000	70~1250
主轴端面至工作台面距离 Distance nose of spindle /worktable	mm	350~1150	950~1650
机床总功率 Total power	kW	约80	约80
机床重量 Total weight	t	约36	约43
主机外形尺寸(长×宽×高) Main Machine Dimension	m	6.1x4.15x4.7	6.8x4x6.5

注:

1. 重量仅供搬运起重时参考, 具体以实物为准;
2. 外观防护分半防护、全防护, 用户可根据实际需要进行选择;
3. 公司持续创新机床设计, 本手册中各系列产品参数将持续优化。

Note:

1. The weight is for reference only, and the actual product shall prevail;
2. The appearance protection of this machine tool has two options: semi-protection and full protection, which can be selected according to actual needs;
3. We continue to innovate machine tool design. The parameters of each series of products in this manual are for reference only. If you have any inquiry, please contact us for the update.

数控齿扇插齿机

CNC SECTOR GEAR SHAPING MACHINE

机床特点

- 1、重载直线导轨，保障刀具主轴切削刚性。
- 2、可选配尾座。
- 3、轴承工作台结构，运动阻力小，旋转精度高，转速快，实现高效加工。
- 4、定制化软件，可加工定比、变比、鼓形、偏心等结构的摇臂轴。
- 5、自动化程度高：立柱自动锁紧，工件自动粗精找正。
- 6、YK5612D:机床X轴和Y轴导轨采用淬火矩形钢轨，具有较强刚性和耐磨性能。
YK5612E:机床X轴采用重载滚柱直线导轨，并配备光栅尺，改善机床微量进给性能，提高加工特殊齿形的精度。

MACHINE TOOL FEATURES

1. Heavy-duty linear guideway to ensure the cutting rigidity.
2. Machine can be equipped with tailstock.
3. Machine table with bearing, the low motion resistance, high rotational accuracy, and high rotational speed to make the machining efficiently.
4. CNC software for machining rocker shaft of constant ratio, variable ratio, eccentric ratio etc.
5. Machine column automatic locked and workpiece automatic located.
6. YK5612D: The X axis and Y axis guide rail adopts hardened rectangular rail, which has strong rigidity and wear resistance.
YK5612E: The X axis adopts heavy-duty roller linear guide rail and is equipped with grating ruler, which improve the micro feed performance and the precision of machining special tooth.



技术参数 THE MAIN PARAMETERS

名称 Description		型号 Type
		YK5612E/YK5612D
最大工件直径 Max. workpiece diameter	mm	150
最大加工模数 Max. Module	mm	12
最大加工齿宽 Max. face width	mm	80
梳齿刀最大冲程长度 Max. stroke length	mm	90
主运动冲程数 Stroke speed of main spindle	str/min	60~600
切削角 Cutting Angle	°	0~10
刀位调整量 Cutter adjusting	mm	50
圆周进给量 Rotary feeding	mm/str	0~2
梳齿刀让刀量 Cutter relieving	mm	≥0.3
工作台直径 Diameter of worktable	mm	300
工作台通孔直径 Diameter of worktable bore	mm	70
X轴行程 X-axis travel	mm	125
X轴径向进给速度 Speed of X-axis radial feed	mm/min	0~3000
Y轴行程 Y-axis travel	mm	260
Y轴切向进给速度 Speed of Y-axis radial feed	mm/min	0~2250
机床总功率 Total power	kW	约30
机床重量 Total weight	t	约9.5
主机外形尺寸(长×宽×高) Main Machine Dimension	m	2.5x2x1.6

注：
1、重量仅供搬运起重时参考，具体以实物为准；
2、外观防护分半防护、全防护，用户可根据实际需要进行选择；
3、公司持续创新机床设计，本手册中各系列产品参数将持续优化。

Note:
1. The weight is for reference only, and the actual product shall prevail;
2. The appearance protection of this machine tool has two options: semi-protection and full protection, which can be selected according to actual needs;
3. We continue to innovate machine tool design. The parameters of each series of products in this manual are for reference only. If you have any inquiry, please contact us for the update.

数控梳槽机

CNC SERRATION MACHINE

机床特点

- 1、刀架整体提拉,加工柔性好;
- 2、机床刚性好,抗振性强,动态精度高;
- 3、防护考虑周全,操作维修方便;
- 4、数字控制稳定可靠,操作方便快捷;

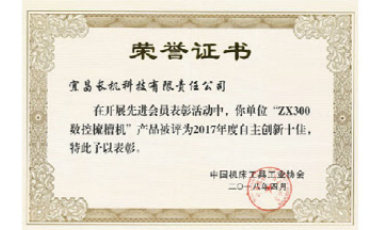
MACHINE TOOL FEATURES

- 1.Shaping housing lifting with strong machining flexibility.
- 2.Strong rigidity, Good Anti-vibration resistance and high precision dynamic.
- 3.Machine Guard & protect safe and easy for operation and maintenance.
- 4.CNC control steady and reliable, easy to operate.



技术参数 THE MAIN PARAMETERS

名称 Description		型号 Type
		ZX300B
最大工件外圆直径 Max. gear outer diameter	mm	300
最小工件外圆直径 Min. gear outer diameter	mm	150
工件模数范围 Module Range	mm	1~6
最大工件宽度 Max. Width	mm	50
工件螺旋角范围 Helical Angle		±35°
相邻小槽错位量 Amount of transplacement between adjacent slot	mm	0~任意 (0~random)
螺旋线头数 Helix Start		1~任意 (0~random)
刀架提拉行程 Lift stroke of tool holder	mm	150
左右小槽错位量 Amount of transplacement between left and right slot	mm	0~任意 (0~random)
相邻螺旋线起点增量 Starting increment of adjacent helix	mm	0~任意 (0~random)
冲程速度 Stroke Speed	str/mm	100~600
主轴电机功率 Power of main motor	kw	11 (伺服主轴)
工件主轴分度精度 Spindle indexing accuracy		0.01° (相对零点)
小槽错位运动轴的重复定位精度 Resetting precision of transplacement moving axis	mm	0.01
机床总功率 Total power	kW	约25.7
机床重量 Total weight	t	约11
主机外形尺寸(长×宽×高) Main Machine Dimension	m	3.15x1.68x2.95



- 注:
- 1、重量仅供搬运起重时参考,具体以实物为准;
 - 2、外观防护分半防护、全防护,用户可根据实际需要进行选择;
 - 3、公司持续创新机床设计,本手册中各系列产品参数将持续优化。

- Note:
1. The weight is for reference only, and the actual product shall prevail;
 2. The appearance protection of this machine tool has two options: semi-protection and full protection, which can be selected according to actual needs;
 3. We continue to innovate machine tool design. The parameters of each series of products in this manual are for reference only. If you have any inquiry, please contact us for the update.